

BILL OF MATERIALS				
MARK	QTY	MATL	DESCRIPTION	SERVICE
1	1	A36	6.4 PL. x 3710 DIA. FLAT BOTTOM	
2	4	A36	4.8 PL. x 1524 x 11492 LG. SHELS	
3	1	A36	4.8 PL. x 3671 DIA. CONED ROOF	
4	1	A36	400 BBL L-SHAPE SKID c/w LADDER, SAFETY HOOP AND LOADING SWIVEL ASSEMBLY	
5	1		NAMEPLATE & BRACKET	
6	1		400 BBL SAFETY TOE RAIL	
7	2		LEVEL INDICATOR ROPE BRACKET (SEE SHT. B-15844-53-D1 FOR DETAILS)	
8	2	A36	LIFT LUGS W/ RFPAD	
9	2	A36	2" CHAIN LINK. (@ 90°) (SEE THIS SHEET FOR LOCATION)	FLAG CONNECTORS
10	2	A36	2" CHAIN LINK. (@ 270°) (SEE THIS SHEET FOR LOCATION)	FLAG CONNECTORS
11			WYLIE OILFIELD DECAL	
12			WYLIE OILFIELD TANK # DECAL	
M1	1	A36	610 x 914 (24" x 36") RECT. MANWAY (LAPPED ON FLOOR)	
	1	A36	762 x 1066 RECT. MANWAY COVER	
M2	1	A53B	762mm (30") SCH STD. ERW PIPE x 245 LONG	
	1	A36	914 O.D. x 765 I.D. MANWAY FLG	
	1	A36	914 DIA. (36") ARG0 FABRICATED HINGED MANWAY COVER (SEE SHT. B-15844-53-D1 FOR DETAILS)	
TH			THIEF HATCH TO BE SUPPLIED BY WYLIE OILFIELD RENTALS	
	1		8" ARG0 FAB. THIEF HATCH EXTENSION COVER OPENING FOR SHIPMENT	
C4A	1	A105	48 DIA. (1 1/2") 3000# FS CPLG	HAWKEYE CONNECTION
C4B-C	2	A105	42 DIA. (1 1/4") 3000# FS CPLG	GUIDE CABLES CONN.
LI			INSTALL CABLE ANCHORS DIRECTLY UNDERNEATH COUPLINGS CUSTOM INDICATOR BRACKETS INSTALLED BY ARG0 SALES LTD INSTALL AT TOP AND BOTTOM OF TANK (SEE SHT. B-15844-53 FOR DET) CUBIC METER LEVEL GAUGE DECAL INSTALLED BY ARG0 SALES HAWKEYE ROADSIDE MODEL LEVEL TO BE INSTALLED BY WYLIE OILFIELD	
C1	1	A105	114 DIA. (4") REC LINE HALF NPT CPLG	VENT
C2	1	A105	114 DIA. (4") REC LINE HALF NPT CPLG	DRAIN
C3A-B	2	A105	60 DIA. (2") 3000# SOCKET WELD/NPT CPLG (SEE SHT. B-15844-53-HC FOR DETAILS)	HEAT COIL IN/OUT
C5	2	A234	89 DIA. (3") SCH 40 90° LRWE	OVERFLOW
	1	A106	89 DIA. (3") STD SMLS PIPE 4933 mm T.O.E.	
	1		89 DIA. (3") THRD'D CAP	
	2	A36	50 x 50 ANGLE IRON BRACKETS (WELDED TO TANK & DOWNCOMER) SEE THIS DWG FOR LOCATION	
N1	1	A105	114 DIA. (4") 150# RFSO FLANGE	RENTAL CONNECTION
	1	A106	114 DIA. (4") SCH 40 SMLS PIPE x 168 LG	
N2	1	A105	114 DIA. (4") 150# RFSO FLANGE	RENTAL CONNECTION
	1	A106	114 DIA. (4") SCH 40 SMLS PIPE x 168 LG	
	1		219 DIA. (8") SCH 40 SMLS PIPE SUMP (SEE DETAIL THIS SHEET)	PUMPOUTW/ SUMP
N3	1	A105	114 DIA. (4") 150# RFSO FLANGE	RENTAL CONNECTION
	1	A106	114 DIA. (4") SCH 40 SMLS PIPE x 168 LG	
N4	1	A105	114 DIA. (4") 150# RFSO FLANGE	RENTAL CONNECTION
	1	A106	114 DIA. (4") SCH 40 SMLS PIPE x 168 LG	
N2 - SUMP DETAIL				
A	1	A234	114 DIA. (4") SCH 40 SMLS 90° LRWE	
B	1	A106	114 DIA. (4") SCH 40 SMLS PIPE x 50 LG	
C	1	A106	219 DIA. (8") DIA. STD. SMLS PIPE x 100 LG.	SUMP SHELL
D	1	A36	6.4 THK. x 219 DIA. (8") DIA. PL.	SUMP BOTTOM

NOZZLES			
MARK	PROJ.	ELEV.	NOTES
C1	N/A	ROOF	VENT
C2	N/A	127mm	DRAIN
C3A-B	N/A	100mm	HEAT COIL IN/OUT
C4A	N/A	SEE DWG	LEVEL GAUGE CONNECTION
C4A-B	N/A	SEE DWG	FLOAT GUIDE CONNECTIONS
C5	N/A	ROOF	WELDED DOWNCOMER
N1	152mm	127mm	RENTAL CONNECTION
N2	152mm	127mm	PUMP OUT w/ SUMP
N3	152mm	127mm	RENTAL CONNECTION
N4	152mm	1041mm	RENTAL CONNECTION

**DESIGN NOTES**

- TANK TO BE BUILT AND TESTED TO API-12F SPEC. MODIFIED (NON-LABELED)
- TANK TO BE AIR/SOAP LEAK TESTED TO 1.5 PSI.
- ROOF/SHELL JOINTS NOT TO BE BACKWELDED TO MEET API-2000 SPECS.
- ESTIMATED SHIPPING WEIGHT = 4990 KG. (11000#)
- REFER TO ORIENTATION DRAWING FOR PROPER LOCATION OF ALL NOZZLES, COUPLINGS, ETC.
- ALL DIMENSIONS ARE IN mm.
- INSTALL LEVEL GAUGE DECALS CENTERED ON "LI" LOCATION AS INDICATED ON ORIENTATION. BREAK TOE RAIL AT BRACKET LOCATION.

**INTERNAL & EXTERNAL FINISH**

- INTERNAL FINISH**  
NO INTERNAL FINISH
- EXTERNAL FINISH**  
BLAST: SSPG-SP6 COMMERCIAL-BLAST  
PRIMER: 2.0 - 3.0 MILS DFT OF CLOVERDALE DURAPRIME EPOXY PRIMER  
PAINT: 2.0 - 3.0 MILS DFT CLOVERDALE DURAGLOSS URETHANE COATING WILSON SAGE GREEN
- BOTTOM FINISH**  
BLAST: SSPC-SP6 COMMERCIAL BLAST  
PRIMER: 2.0 - 3.0 MILS OF CLOVERDALE DURAPRIME EPOXY PRIMER  
PAINT: 2.0 - 3.0 MILS DFT CLOVERDALE DURAGLOSS URETHANE COATING WILSON SAGE GREEN
- DECALS**  
INSTALL LEVEL GAUGE DECALS CENTERED ON "LI" LOCATION AS INDICATED ON ORIENTATION

**REVISIONS**

NO.	DESCRIPTION	BY	DATE
1	ADDED DECALS, ITEM 11 & 12 AS PER WYLIE OILFIELD	WE	01.20.03
0	ISSUED FOR FABRICATION AS PER VERBAL APPROVAL	WE	01.14.03

CUSTOMER: WYLIE OILFIELD RENTALS

TITLE: ONE (1) 64 CU. M. (400 BBL) 3658 x 6096 HIGH L-SKIDDED STORAGE TANK

APPROVED BY:	CHECKED BY:	DRAWN BY: WE
DATE: 08/02/01	TAG #:	DRAWING#: B-15844-53_R1
SHEET: 1 OF 4	SCALE: NTS	SERIAL#: 15844-53

QUOTE #: TQ02-352

WYLIE OILFIELD RENTALS

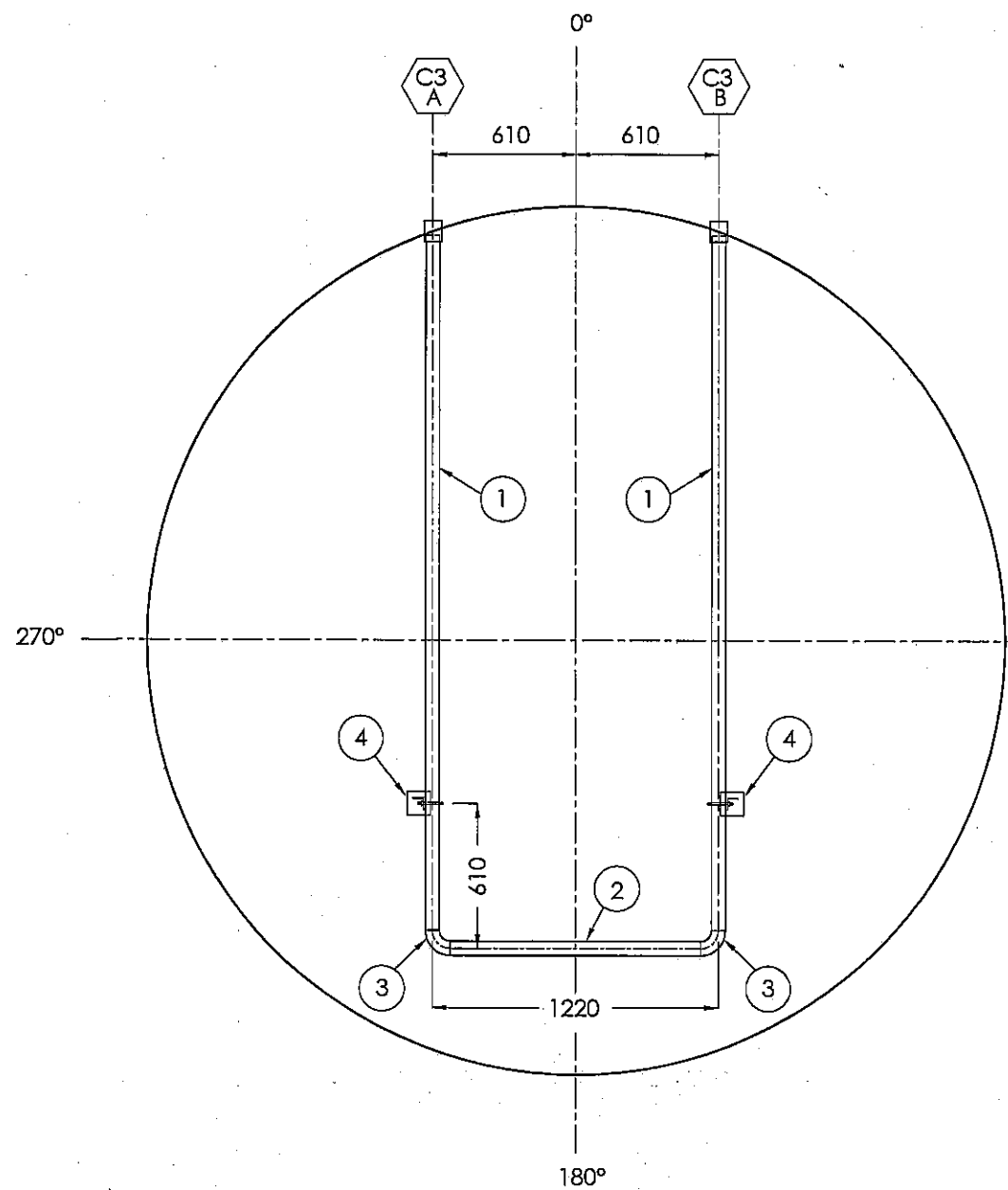
CUSTOMER:

400 BBL L-SKIDDED STORAGE TANK

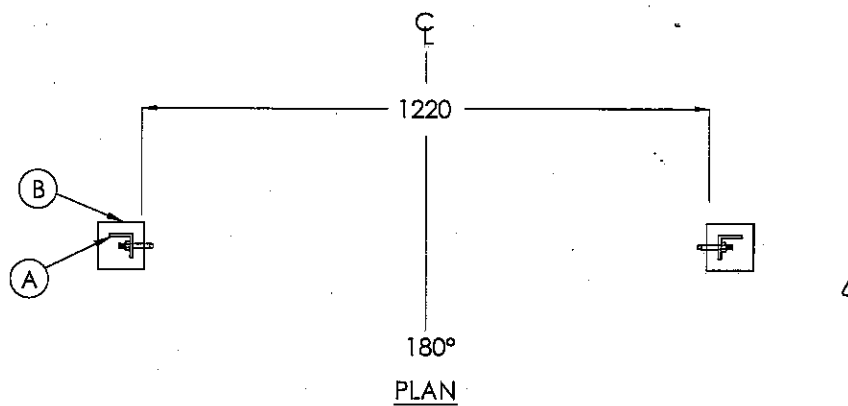
TITLE:

QUOTE #: TQ02-352

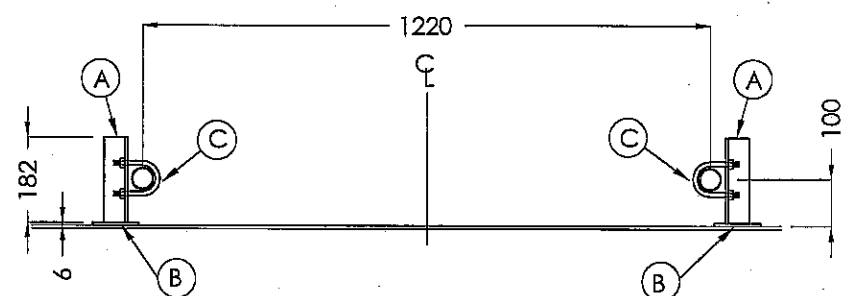




HEAT COIL ORIENTATION



180° PLAN



ELEVATION

SUPPORT BRACKET DETAIL

BILL OF MATERIALS

MARK	QTY	MAT'L	DESCRIPTION	SERVICE
C3 A-B	2	A105	60 DIA. (2") 3000# SOCKET WELD /NPT CPLG	HEAT COIL IN / OUT
<b>HEAT COIL COMPONENTS</b>				
1	2	A106	60 DIA. (2") SCH 80 SMLS PIPE x 2915 LG.	
2	2	A106	60 DIA. (2") SCH 80 SMLS 90° LRWE	
3	1	A106	60 DIA. (2") SCH 80 SMLS PIPE x 1067 LG.	
4	2		HEAT COIL SUPPORT BRACKET (SEE DETAIL THIS SHEET)	
<b>SUPPORT BRACKET DETAIL</b>				
A	2	A36	6.4 THK. x 51 x 51 x 499 182 LG ANGLE	
B	2	A36	6.4 THK. x 100 x 100 BASE PLATE	
C	2	316SS	60 DIA. (2") U-BOLT c/w NUTS & WASHERS	
DRILL SUPPORT ANGLE & INSTALL U-BOLTS AFTER HEAT COIL IS IN PLACE				

NOZZLES			
MARK	PROJ.	ELEV.	NOTES
N3 A-B	N/A	100mm	

DESIGN NOTES
1. HYDRO TEST HEAT COIL TO 450 PSI
2. 10% X-RAY ON HEAT COIL
3. ESTIMATED SHIPPING WEIGHT = 600 LBS. (273 KG)
4. ALL DIMENSIONS ARE IN mm.
5. ALL ELEVATIONS TAKEN FROM TOP OF TANK FLOOR
6. DRILL SUPPORT ANGLE & INSTALL U-BOLTS AFTER HEAT COIL IS IN PLACE

INTERNAL & EXTERNAL FINISH	
HEAT COIL EXTERNAL FINISH	
NIL	

REVISIONS			
NO.	DESCRIPTION	BY	DATE
1	916SS U-BOLTS AS PER WYLIE OILFIELD	WE	01.20.03
0	ISSUED FOR FABRICATION AS PER VERBAL APPROVAL	WE	01.14.03

CUSTOMER: WYLIE OILFIELD RENTALS

TITLE: - HEAT COIL DETAILS -

APPROVED BY:	CHECKED BY:	DRAWN BY: WE
DATE: 05/22/01	TAG #:	DRAWING #B-15844-53-HC
SHEET: 3 OF 4	SCALE: NTS	SERIAL #: 15844-53

ARGO SALES LTD

QUOTE#:

WYLIE OILFIELD RENTALS

CUSTOMER:

- HEAT COIL DETAIL -

TITLE:

TG02-352

