

HEATER

500,000 BTU/HR INDIRECT LINE HEATER
30"OD X 10'-0"LG

COIL #1
2"-SCH 80, 4 PASS
DESIGN PRESSURE: 3375 PSIG
DESIGN TEMP.: 200°F/-20°F
C.A.: 0
* RADIOGRAPHY: 5%
* PWHT: NO

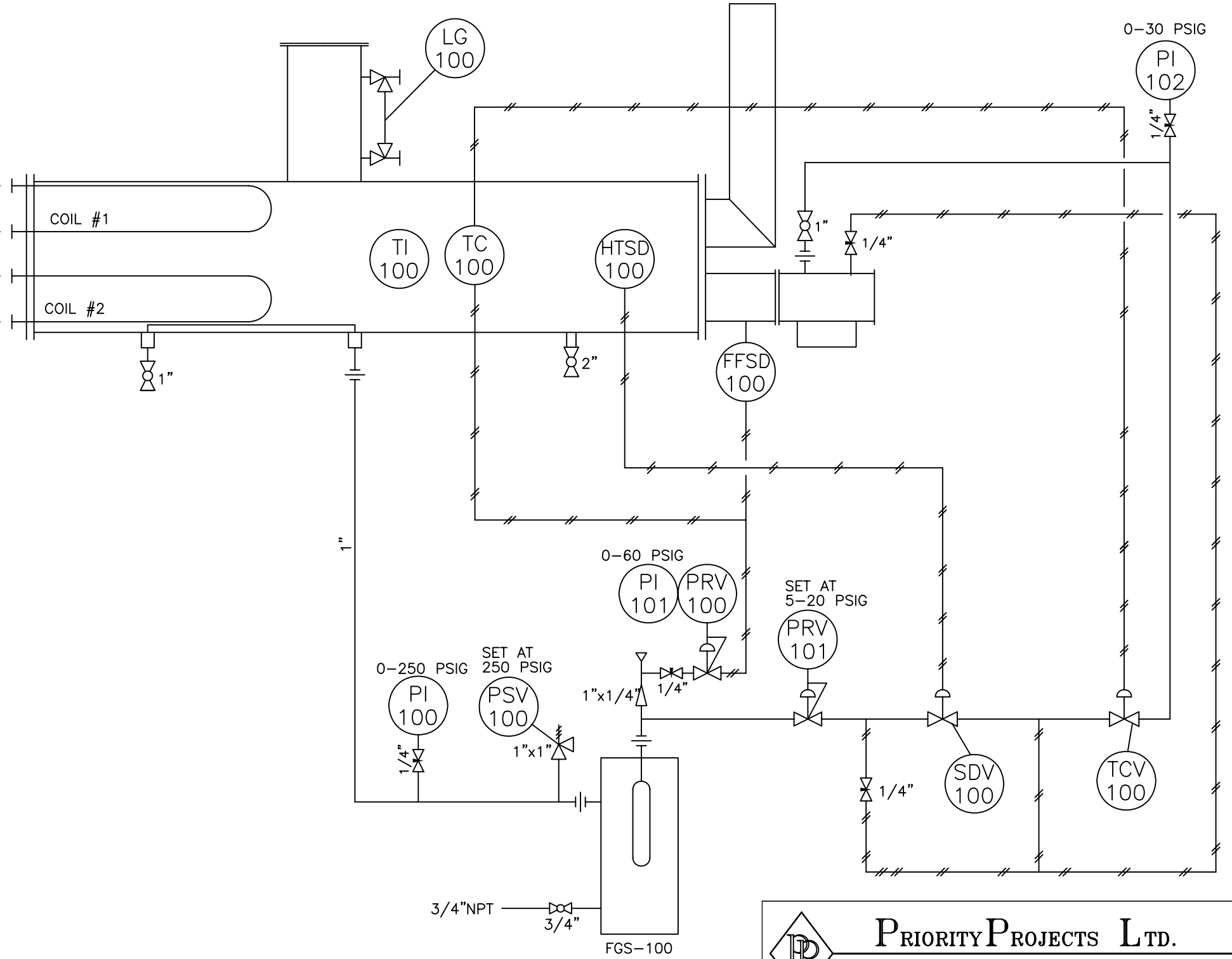
COIL #2
2"-SCH 80, 4 PASS
DESIGN PRESSURE: 3375 PSIG
DESIGN TEMP.: 200°F/-20°F
C.A.: 0
* RADIOGRAPHY: 5%
* PWHT: NO

FGS-100

FUEL GAS SCRUBBER
6 5/8"OD X 36"LG
DESIGN PRESSURE: 275 PSIG @ -20°/100°F
C.A.: 0
* PWHT: NO

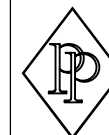
* OPTIONAL SOUR SERVICE:
-RADIOGRAPHY: 100%
-PWHT: 30 MIN. @1150°F

2"-1500# RFWN INLET
2"-1500# RFWN OUTLET
2"-1500# RFWN INLET
2"-1500# RFWN OUTLET



NOTES:

1. PIPING TO BE FABRICATED IN ACCORDANCE WITH ASME CODE B31.3
2. 1" PIPING TO BE A-106-B SCH.80, FITTINGS - 2000# NPT, A-105.
3. TUBING TO BE 3/8" & 1/2" ELECTRO GALVANIZED TUBING c/w PARKER C.S. FITTINGS.
4. VALVES:
NPT BALL VALVES -MAS
NPT NEEDLE VALVES - ANDERSON GREENWOOD
5. PAINTING:
SANDBLAST TO SSPC-SP6
ONE (1) COAT OF PRIMER
ONE COAT OF FINISH ENAMEL - PPL BLUE
STACK- ONE (1) COAT OF HIGH TEMPERATURE BLACK
6. FILL VOLUME OF HEATER SHELL: 238 IMP. GALLONS
FILL VOLUME OF EXPANSION POT: 25 IMP. GALLONS
TOTAL COIL VOLUME: 1.66 Cu. Ft.
TOTAL WT (INCL. SKID,BLDG & INSUL.): 4390 LBS



PRIORITY PROJECTS LTD.

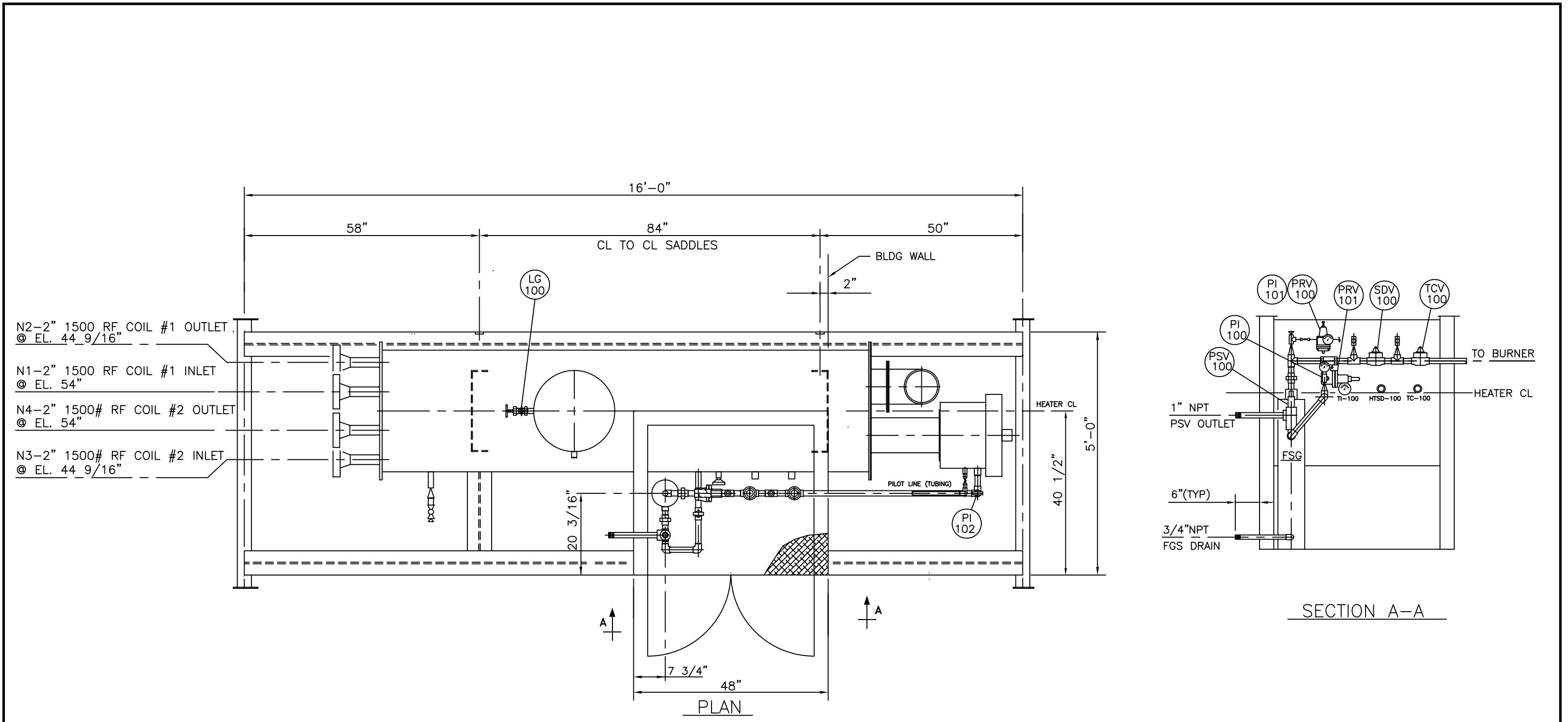
1603-8 STREET, NISQU, ALBERTA T9E S7S
TELEPHONE: (403) 955-3320 FAX: (403) 955-2561


500,000 BTU/HR INDIRECT LINE HEATER 30"OD x 10'-0"LG
PIPING AND INSTRUMENTATION DIAGRAM

0	YR MO D	FOR FABRICATION	SPB				
NO.	DATE	REVISIONS	DRAWN	CHECK	DESIGN	APPR.	
			DRAFTING		ENGINEERING		

CUSTOMER NAME	SCALE	DRAWING NUMBER	REV.
CUSTOMER DWG NUMBER	NTS	500-STDF	0

B-STD-IS





PRIORITY PROJECTS LTD.

1603-8 STREET, NISKU, ALBERTA T9E 7S7
 TELEPHONE: (403) 955-3320 FAX: (403) 955-2561

500,000 BTU/HR INDIRECT LINE HEATER 30"OD X 10'-0"LG
 GENERAL ARRANGEMENT

CUSTOMER NAME	SCALE	DRAWING NUMBER	REV.
CUSTOMER DWG NUMBER	1"=1'-0"	500-STDGA	0

0	YR MO D	FOR APPROVAL		SPB					
NO.	DATE	REVISIONS		DRAWN	CHECK	DESIGN	APPR.		
				DRAFTING		ENGINEERING			